

Japan Today

Login | Register

Crisscross Friends | Search | Favorites | Go

Crisscross Friends: Find international friends 100% FREE



JAPAN TODAY

News Features New Posts Popular Posts Highest Rated Metropolis
Classifieds

“ The idea of both parents being involved in raising the child is foreign to the Japanese culture. There's been no historic role for both parents being involved, and the legal system makes no provision for any kind of visitation rights. ”

[View All / Discuss It \(7\)](#)

National

Embassy worker commits suicide
Paloma admits defect in heaters
Volunteers help tsunami orphans
NHK punishes 183 employees
China, Japan begin study research
Students looking for WWII flag owner
War tribunal documents to go public
5 die in fires in Sendai, Kumamoto
Gov't protests 'abduction try' story
Japan to give food aid to Philippines

Politics

Canon to resume political donations
Abe to visit Europe Jan 9-13
Hu says U.S., NK flexibility needed
Abe tells Sata to look into false funds
Abe picks Kosai as tax panel chief
Spanish PM due Jan 15-18
Mozambican president to visit
Defense Ministry starts Jan 9
Japan-U.S. security talks delayed
Iran refuses Japan's appeal

Crime

Architect Aneha sentenced to 5 years
Local gov't corruption cases up
Russia finds skipper Y4 mil
Noisy neighbor gets 20 months
Couple found guilty of buying kidney
No retrial in 1961 murder case
Brazil police seek murder suspect
Foreign intern sues over sex assault
4 death row inmates hanged
Ex-Nikkei employee sentenced

Business

Toyota names 1st-ever woman GM
Toyota to revamp work system
Panel seeks law to help part-timers
Bailout body ends Skynet support
Steelmakers, Rio Doce reach deal
No. of local gov't workers falls
Household spending down 0.7%
Mazda Carol gets a facelift
Jobless rate falls to 4% in Nov
Core CPI rises 0.2% in November

Last manned lighthouse becomes automated

Monday, November 13, 2006 at 17:52 EST

NAGASAKI (Kyodo) – The Meshima lighthouse on one of Nagasaki Prefecture's Danjyo Islands changed its power source from diesel to solar light Sunday, in a move to automate the nation's last manned lighthouse.

The change at the lighthouse, which went on-stream in 1927 and appeared in a 1957 film featuring a lighthouse keeper's life, completed the Japan Coast Guard's project to automate all 3,337 lighthouses throughout the country.

Due to some remaining operations, workers will stay on at the Meshima lighthouse until early December but after that, the lighthouse will be unmanned.

The workers at the lighthouse gave up making visual measurements of wave heights at the end of March, with measurements now carried out by the radar of Fukue Island's lighthouse in the same prefecture.

From now on, the Meshima lighthouse will automatically transmit weather data such as barometric pressure, wind speed and the direction of wind, electronically.

"We sincerely respect workers such as the lighthouse keepers and their families who strove hard to ensure the safety of vessel traffic night and day," Kazuhiko Masuda, head of the JCG's Maritime Traffic Department, said at a press conference on Fukue Island.

The Meshima lighthouse, about 15 meters high, stands on a cliff on one of the Danjyo Islands. The islands are recognized as a natural treasure and permission is required to visit them. The sea around the islands is popular with fishermen.



CRISSCROSS DIRECTORY

Life Insurance - 1 MILLION US \$

1 Million US dollars for 500 US dollars per year

Metropolis Podcast, the coolest

guide to what goes on this week in Tokyo

Voucher on new TOYOTA

Apply online now to take this chance

Be technically skilled

Online learning service anytime, anywhere

Serviced apartments in Tokyo

The Serviced Apartments Pioneer Since 1974

Need a mobile phone?

Low cost phone rental service for travelers

International Pharmacy

Medicine from USA for your personal use

Cheap guesthouses in Tokyo

58 locations for any budget with free Internet

Canadian Oil Sands Real Estate

Profitable, Hands Free, Investment Properties

1 month free rent!

Tokyo Apartments - From 119,000 yen/month!

Computer repair fast reasonable

Rentals, maintenance, data back-up, on site etc.

Car Insurance in Japan?

AIU Insurance will help you

Century 21 SKY Realty

Luxury Apartments & Houses from ¥300,000

Legal & Business Support

Immigration, Corporate Documents, Contract

Sakura House monthly rooms

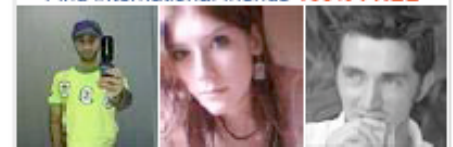
Over 1100 Tokyo apartments and guesthouses

Crisscross Creative, solutions

for your marketing and communication needs

[VIEW DIRECTORY](#)

Find international friends 100% FREE



Mazda & Nissan Rentals
Compact cars from around
¥4,000/day!

[Metropolis Ticket Office](#)